



**ZHEJIANG BENYI NEW ENERGY CO.,LTD.**

SHUANGHUANGLOU INDUSTRIAL ZONE, BEIBAIXIANG TOWN, YUEQING CITY, WENZHOU CITY, ZHEJIANG PROVINCE, CHINA.

TEL: +86-577-5717 7008 FAX: +86-577-5717 7007

✉ info@beny.com 🏠 Importer:xxxxxxx

🌐 www.beny.com 📍 Address:xxxxxxx

♻️ This catalogue has been printed on ecological paper .  
© Zhejiang Benyi New Energy Co., Ltd. All rights reserved.  
⚠️ If the models and specifications in this product catalogue change due to product updates, we will not provide prior notification.






VERSION: 20240822-01

# High Voltage Battery Energy Storage



## Product Specifications

Parameters	BYES-HV7833-2S	BYES-HV7833-3S	BYES-HV7833-4S
			
Nominal Capacity [kWh]	15.66	23.5	31.32
Battery Module	76.8V 7.83kWh		
Number of Modules	2	3	4
Cell Type	LFP(LiFe P04)		
Nominal Voltage [V]	153.6	230.4	307.2
Operating Voltage[V]	120~ 175.2	180~262.8	240~ 350.4
Max.Charge Current [A]	51	51	51
Max.Discharge Current [A]	51	51	51
Dimension[W*D*H]	830mm*170mm*1156mm	830mm*170mm*15434mm	830mm*170mm*1930mm
Approximate Weight [KG]	154.3	219	283.7
Other Parameter			
Recommend Depth of Discharge	95%		
LED Indicator	SOC LED Indicator: In the standing state, the length of the indicator bar is related to the remaining battery capacity Failure light: Yellow when there is a mild fault, red when there is a moderate or severe fault Charging state light: The lamp bead starts to light from left to right for charging state Discharge status lamp: The lamp bead begins to dim from right to left to discharge status		
IP Rating of Enclosure	IP65		
Working Temperature	Charging : 0°C-55°C; Discharging: -30°C-60°C		
Working Humidity	≤ 95%(RH) No Condensation		
Working Altitude	≤ 2000m		
Storage Temperature	0°C~35°C		
Cycle Life	>5000 0.2C80%D0D(25±2°C)		
Installation	Stacking Mount		
Communication Port	LAN;RS485;CAN		
Certification	UN38.3,IEC62619,CE		

[1] DC Usable Energy,test conditions:95% DOD, 0.5C charge & discharge at 25°C. System usable energy may vary due to system configuration parameters.

[2]The current is affected by temperature and SOC.

### Introduction

BENY Residential Li-ion Battery System BYES-HV is a high voltage lithium battery with an integrated battery system that stores your energy for backup protection when the grid goes down.

This series is particularly suitable for applications with high power and long cycle life.

This series has built-in BMS battery management system.which can manage and monitor cells information including voltage, current and temperature.What's more. BMS can balance cells charging and discharging to extend cycle life.

Multiple battery modules can connect in series to expand capacity and power for larger capacity an longer power supporting duration requirements.



## System Components

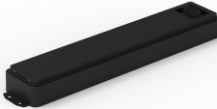
System Components	
BYER-HV7833	High Voltage Battery Control Unit (BCU)
Operating Voltage	50-300Vdc
Ingress Protection	IP65
Dimension(W*D*H)	830 *170*320mm
Approximate Weight	20KG



System Components	
BYER-HV7833	Battery Module
Battery Type	LiFeP04(LFP)
Nominal Voltage	76.8VDC
Nominal Capacity	102Ah
Nominal Energy	7.833kWh
Max Charge /Discharge Current	51A
Operating Temperature	Charging :0°C-55°C; Discharging:-30°C-60°C
Storage Temperature	0°C-35°C
Ingress Protection	IP65
Dimension(W*D*H)	830 *170*403mm
Approximate Weight	64.7KG






System Components	
BYER-HV7833	Base
Dimension(W*D*H)	830 *170*78 mm
Approximate Weight	4.9KG





## Product Specifications

Parameters	BYES-HV3993-2S	BYES-HV3993-3S	BYES-HV3993-4S
			
Nominal Capacity [kWh]	7.98	11.97	15.96
Battery Module	76.8V 3.99kW		
Number of Modules	2	3	4
Cell Type	LFP(LiFe P04)		
Nominal Voltage [V]	153.6	230.4	307.2
Operating Voltage[V]	120~ 175.2	180~262.8	240~ 350.4
Max.Charge Current [A]	26	26	26
Max.Discharge Current [A]	26	26	26
Dimension[W*D*H]	560mm*170mm*1156mm	560mm*170mm*1543mm	560mm*170mm*1930mm
Approximate Weight [KG]	92.9	129.8	166.7
Other Parameter			
Recommend Depth of Discharge	95%		
LED Indicator	SOC LED Indicator: In the standing state, the length of the indicator bar is related to the remaining battery capacity Failure light: Yellow when there is a mild fault, red when there is a moderate or severe fault Charging state light: The lamp bead starts to light from left to right for charging state Discharge status lamp: The lamp bead begins to dim from right to left to discharge status		
IP Rating of Enclosure	IP65		
Working Temperature	Charging :0°C-55°C; Discharging:-30°C-60°C		
Working Humidity	≤ 95%(RH) No Condensation		
Working Altitude	≤2000m		
Storage Temperature	0°C~35°C		
Cycle Life	>5000 0.2C80%DOD(25±2°C)		
Installation	Stacking Mount		
Communication Port	LAN;RS485;CAN		
Certification	UN38.3,IEC62619,CE		

[1] DC Usable Energy,test conditions:95% DOD, 0.5C charge & discharge at 25℃. System usable energy may vary due to system configuration parameters.

[2]The current is affected by temperature and SOC.

### Introduction

BENY Residential Li-ion Battery System BYES-HV is a high voltage lithium battery with an integrated battery system that stores your energy for backup protection when the grid goes down.

This series is particularly suitable for applications with high power and long cycle life.

This series has built-in BMS battery management system.which can manage and monitor cells information including voltage, current and temperature.What's more. BMS can balance cells charging and discharging to extend cycle life.

Multiple battery modules can connect in series to expand capacity and power for larger capacity an longer power supporting duration requirements.



## System Components

System Components	
BYES-HV3993	High Voltage Battery Control Unit (BCU)
Operating Voltage	50-300Vdc
Ingress Protection	IP65
Dimension(W*D*H)	560*170*320mm
Approximate Weight	15.6KG



System Components	
BYES-HV3993	Battery Module
Battery Type	LiFeP04(LFP)
Nominal Voltage	76.8VDC
Nominal Capacity	52Ah
Nominal Energy	3.993kWh
Max Charge /Discharge Current	26A
Operating Temperature	Charging :0°C-55°C; Discharging:-30°C-60°C
Storage Temperature	0°C-35°C
Ingress Protection	IP65
Dimension(W*D*H)	560*170*403mm
Approximate Weight	36.9KG



System Components	
BYES-HV3993	Base
Dimension(W*D*H)	560*170*78mm
Approximate Weight	3.5KG

